

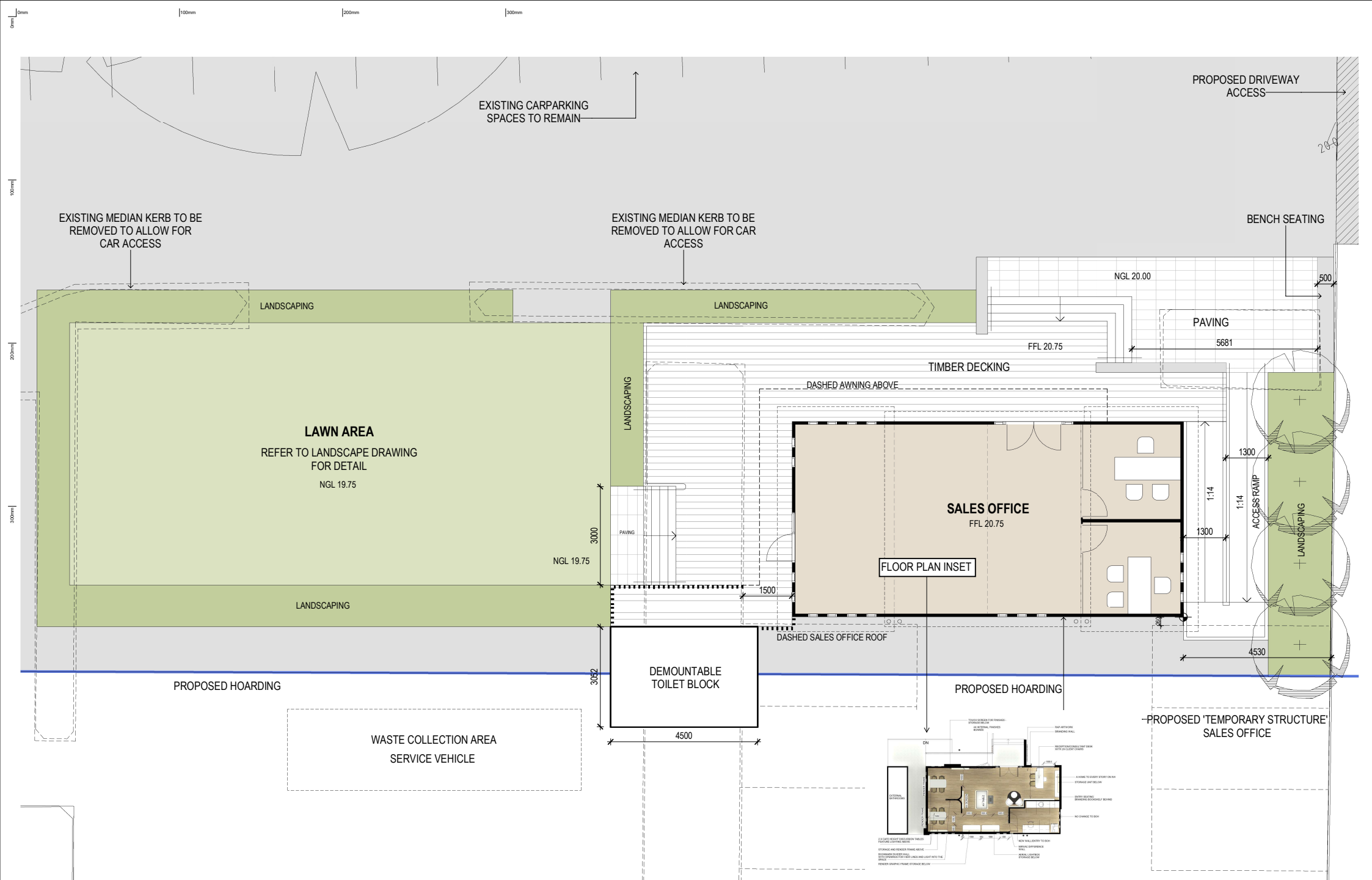
WESTERN SYDNEY UNIVERSITY - WSU

TEMPORARY SALES OFFICE

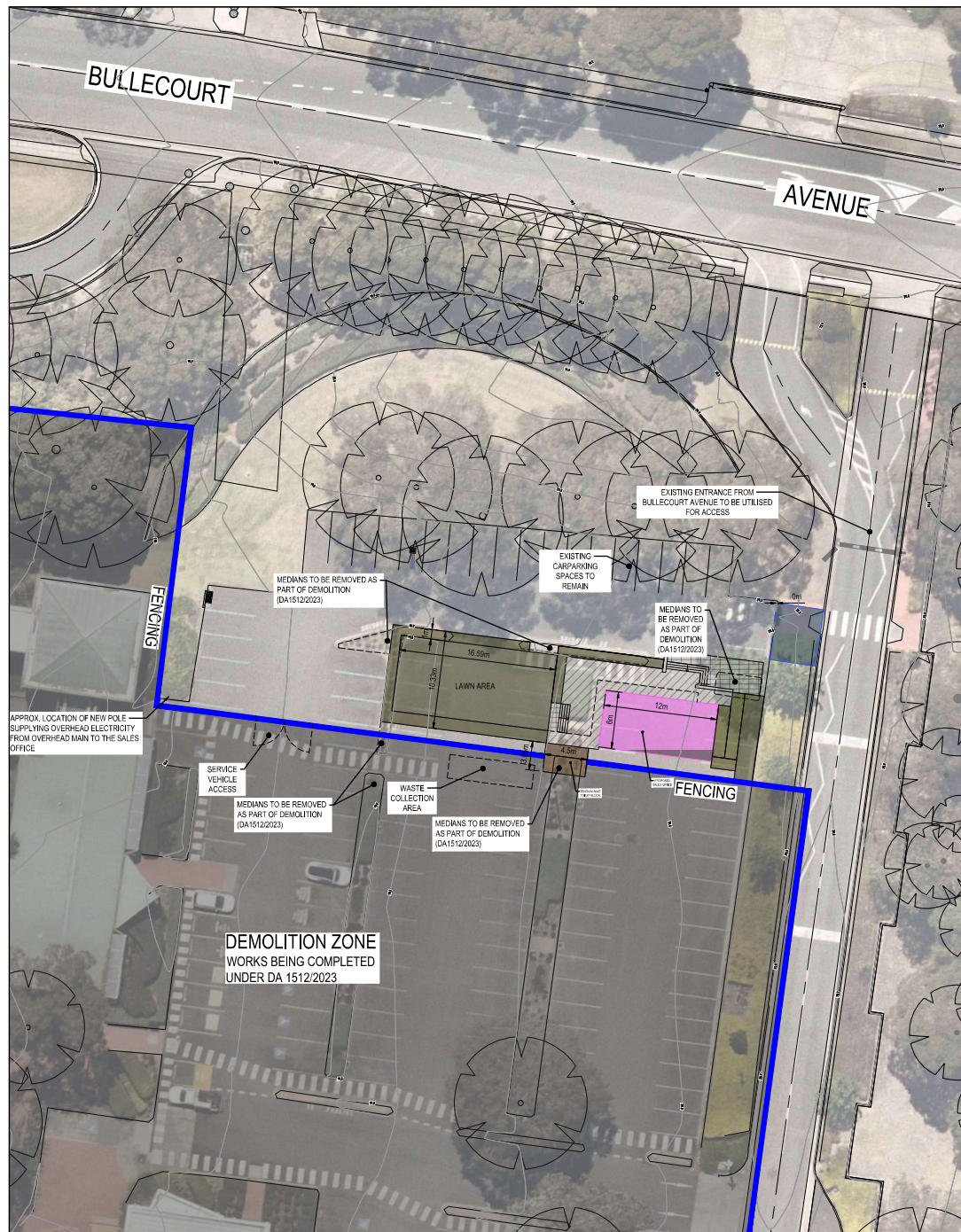
SHEET NO.	DRAWING TITLE	REV
S1-01-DA000	COVER SHEET	C
S1-01-DA001	SITE PLAN	D
S1-01-DA002	DETAILED LAYOUT SALES OFFICE	D
S1-01-DA003	SALES OFFICE ELEVATIONS	D



PROPOSED INDICATIVE ARTIST IMPRESSION. ALL LANDSCAPE FEATURES ARE INDICATIVE ONLY. REFER TO LANDSCAPE CONSULTANTS DOCUMENTATION PACKAGE FOR LANDSCAPE DESIGN AND PLANT SELECTION.

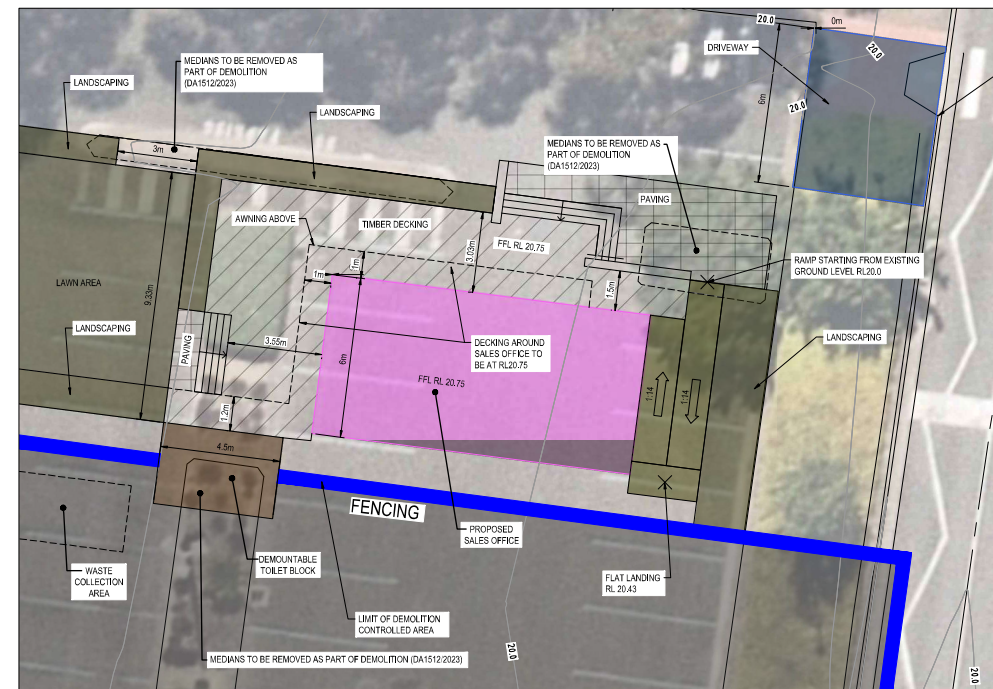


06.11.24	D	ISSUE FOR DEVELOPMENT APPLICATION
26.11.24	C	ISSUE FOR DEVELOPMENT APPLICATION
21.11.24	S	ISSUE FOR DEVELOPMENT APPLICATION
14.11.24	A	ISSUE FOR CONSULTANTS
06.11.24	REV	amendments



LEGEND	
	EXISTING SURFACE CONTOURS
	LINEMARKING & KERBS TO BE REMOVED
	KERB TO BE CONSTRUCTED
	PROPOSED SALES OFFICE LOCATION
	DEMOUNTABLE TOILET BLOCK LOCATION
	WHEELCHAIR ACCESS RAMP
	REFILLABLE RAINWATER TANK
	EXISTING TREES
	EXISTING DRAINAGE PIPE & PIT
	EXISTING PAVEMENT MARKING
	EXISTING TRAFFIC SIGNAGE

NOTE:
RL'S PROVIDED ARE ESTIMATIONS ONLY



DETAIL OF TEMPORARY SALES OFFICE
SCALE 1:100

WARNING
BWARE OF UNDERGROUND SERVICES
The locations of underground services are approximate only and their exact position should be proven on site.
No guarantee is given that all existing services are shown.
Locate all underground services before commencement of works.
DIAL 1100 BEFORE YOU DIG
www.1100.com.au

PRELIMINARY PRINT
NOT FOR CONSTRUCTION

REV		DESCRIPTION	DATE	BY	APP.	REV	DESCRIPTION	DATE	BY	APP.
E		ROLLBACKS REMOVED	01/01/24	S.G.	S.G.					
D		NOTES & ELECTRICAL SERVICE AMENDED	08/10/24	S.G.	S.G.					
C		LOCATION OF SALES OFFICE AMENDED	06/08/24	T.R.	S.G.					
B		LOCATION OF SALES OFFICE AMENDED	06/08/24	T.R.	S.G.					
A		ISSUED FOR INFORMATION	01/01/24	S.G.	S.G.					

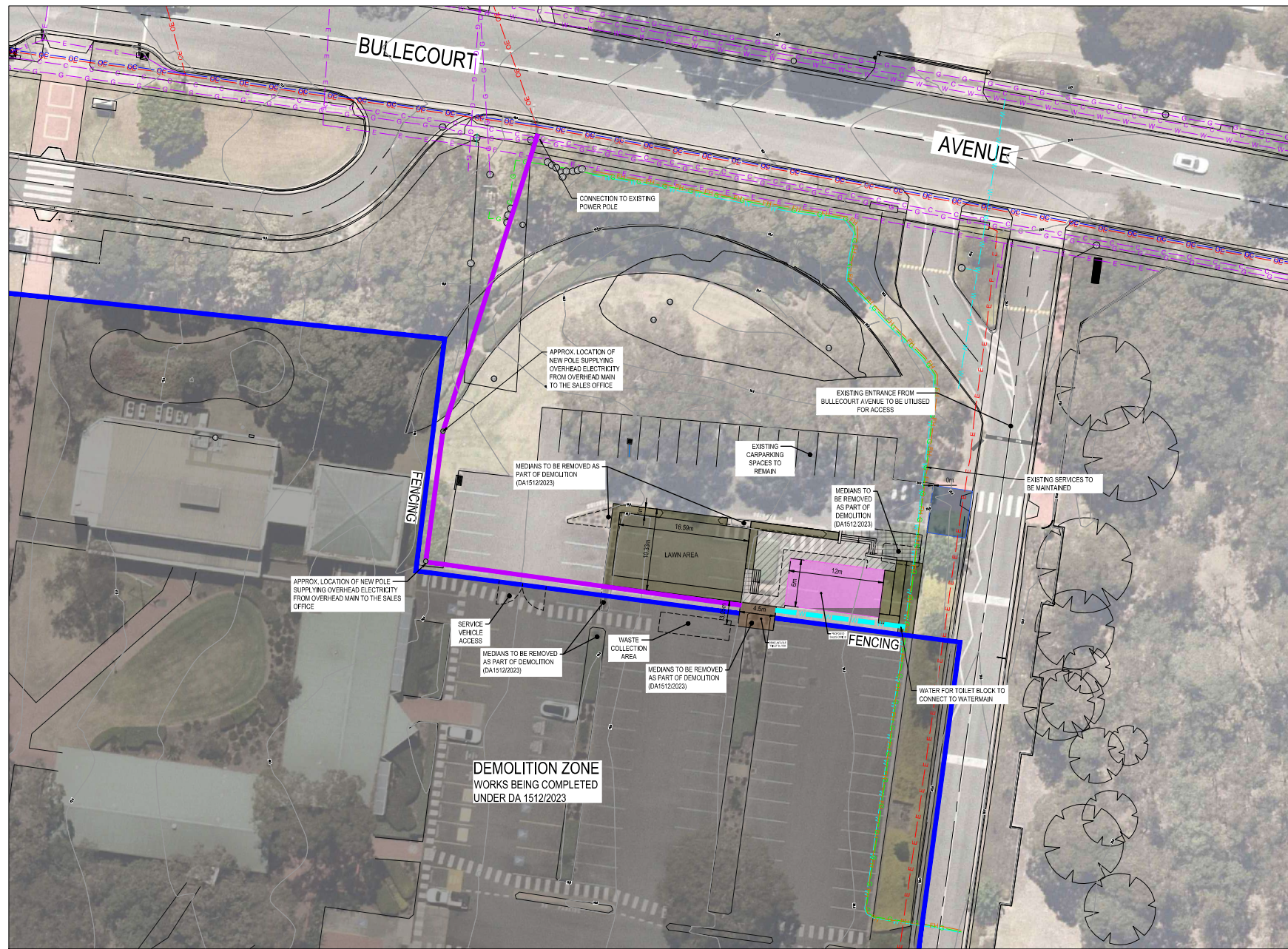


Designed	A.PERICH
Date	01.05.24
Drawn	A.PERICH
Approved	S.GRAY
Date	01.05.24
DA Number	N/A

BW **Beveridge Williams**
Development & Infrastructure Consultants
Tuggerah Business Park Unit 4, 5 Colony Ct
Tuggerah NSW 2259
p: 02 43512233
www.beveridgewilliams.com.au

Project	WSU BANKSTOWN CAMPUS LOT 2 IN DP 1291984, 2A BULLECOURT AVENUE, MILPERRA
Drawing Title	PROPOSED SALES OFFICE PLAN

Sheet	01 of 03
Scale	1:250 @ A1
Project Number	2301879
Reference	305
Drawing No	010
Revision	G



LEGEND

- BOLLARD
- GATE
- ELECTRICAL PILLAR
- POWER POLE
- LIGHT POLE
- COMMS JUNCTION PIT
- MANHOLE
- MAINTENANCE SHAFT
- INSPECTION OPENING
- TAP
- HYDRANT
- STOP VALVE
- WATER METER
- RECYCLED WATER HYDRANT
- RECYCLED WATER STOP VALVE
- GAS VALVE
- GRATED PIT
- PIT/LINTEL
- SAG PIT
- BENCHMARK
- TREE
- BANK
- PROPOSED SALES OFFICE LOCATION
- DEMOUNTABLE TOILET BLOCK LOCATION
- WHEELCHAIR ACCESS RAMP
- REFILLABLE RAINWATER TANK

THE SYMBOLS DEPICTED ARE PURELY ILLUSTRATIVE AND SHOULD NOT BE INTERPRETED AS EXACT REPRESENTATIONS. THE SCALE AND ORIENTATION OF THESE SYMBOLS MAY NOT ACCURATELY REFLECT THE ACTUAL SIZE OR ORIENTATION OF THE CORRESPONDING FEATURES.

PROPOSED OVERHEAD POWER

UNDERGROUND POWER

OVERHEAD POWER

COMMUNICATIONS

SEWER

WATER

RECYCLED WATER

GAS

SERVICE HYDRANT

EXISTING DRAINAGE & PIT

CONTOUR

UNDERGROUND POWER

COMMUNICATIONS

SEWER

WATER

SEWER

STORM WATER

FIRE HYDRANT

SERVICES SHOWN IN PURPLE HAVE BEEN PROVIDED BY OTHERS. LOCATION AND CONNECTIVITY NOT VERIFIED.

ALL OVERHEAD COMMS AND ELECTRICAL ARE APPROXIMATE ONLY.

THIRD PARTY DATA FROM DWG FILE - 2301879-010-LAY

WARNING

BEWARE OF UNDERGROUND SERVICES

The locations of underground services are approximate only and their exact position should be proven on site. No guarantee is given that all existing services are shown. Locate all underground services before commencement of works.

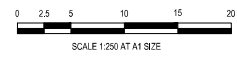
DIAL 1100 BEFORE YOU DIG

www.1100.com.au

PRELIMINARY PRINT

NOT FOR CONSTRUCTION

REV	DESCRIPTION	DATE	BY	APP.	REV	DESCRIPTION	DATE	BY	APP.
E	BOLLARDS REMOVED	5.10.24	S.G.	S.G.					
D	NOTES & ELECTRICAL SERVICE AMENDED	08.10.24	S.G.	S.G.					
C	LOCATION OF SALES OFFICE AMENDED	30.08.24	T.R.	S.G.					
B	LOCATION OF SALES OFFICE AMENDED	09.08.24	T.R.	S.G.					
A	ISSUED FOR INFORMATION	01.06.24	A.P.	S.G.					



Designed By: A.PERICH
Date: 01.05.24
Drawn By: A.PERICH
Approved By: S.GRAY
Date: 01.05.24
DA Number: N/A

BW **Beveridge Williams**
Development & Infrastructure Consultants
Truganah Business Park Unit 4, 5 Colony Ct
Truganah NSW 2209
p: 02 43512233
www.beveridgewilliams.com.au

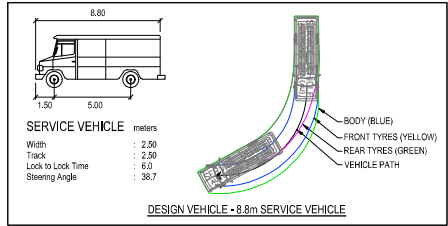
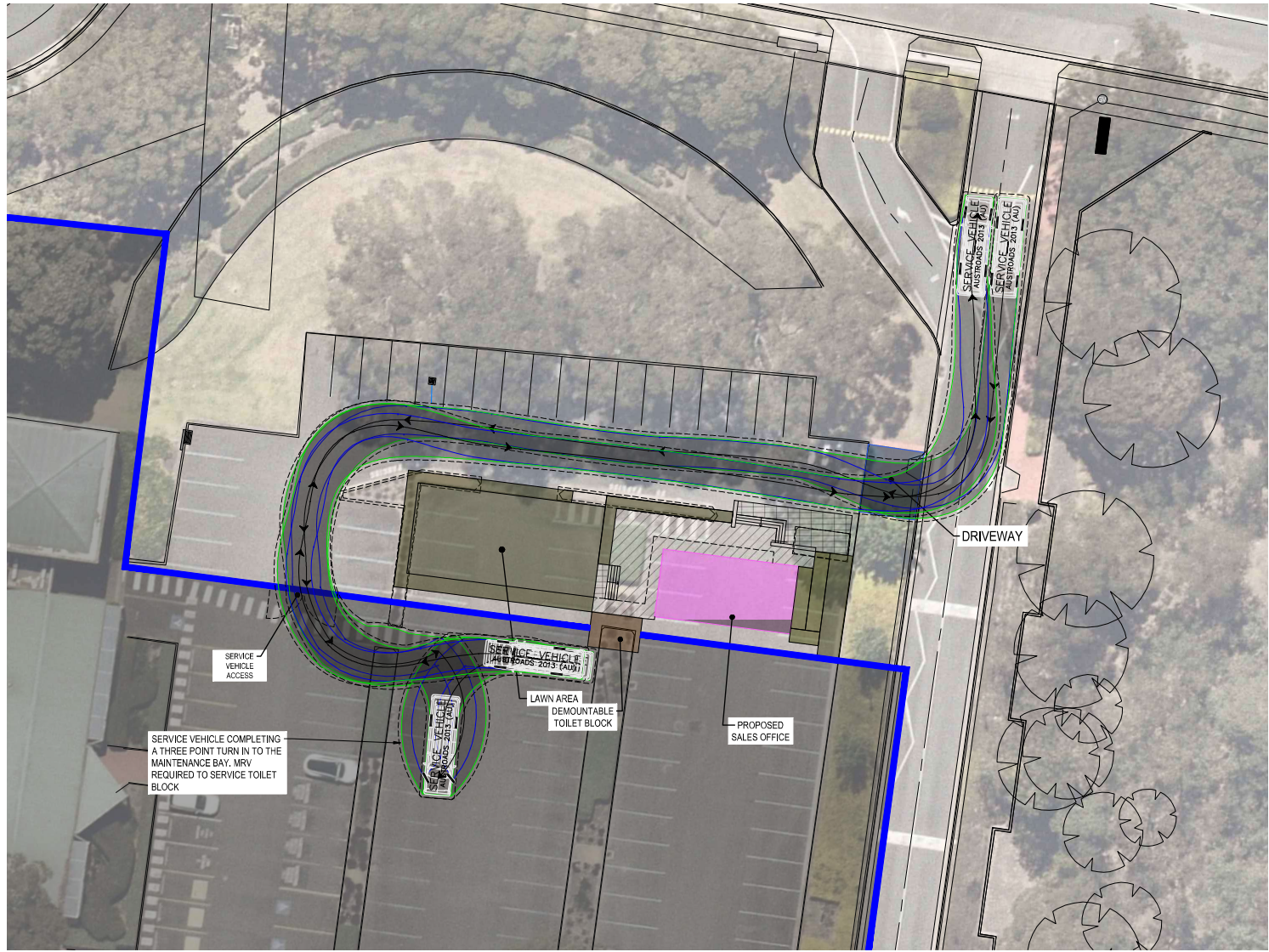
Project Details
WSU BANKSTOWN CAMPUS
LOT 2 IN DP 1291984,
2A BULLECOURT AVENUE, MILPERRA

Drawing Title
CONSOLIDATED SERVICES PLAN

Sheet 02 of 03

Scale: 1:250 @ A1

Project Number: 2301879
Reference: 305
Drawing No: 011
Revision: G



<small>© COPYRIGHT: All rights reserved. Beveridge Williams & Co. Pty. Ltd. has granted a license to the licensee to use this document for its intended purposes. No unauthorised copying is permitted.</small>									
E	BOLLARDS REMOVED	5/10/24	S.G.	S.G.					
D	NOTES & ELECTRICAL SERVICE AMENDED	08/10/24	S.G.	S.G.					
C	LOCATION OF SALES OFFICE AMENDED	30/08/24	T.R.	S.G.					
B	LOCATION OF SALES OFFICE AMENDED	09/08/24	T.R.	S.G.	G	UPDATES TO ELECTRICAL POLE	03/12/24	T.R.	J.G.
A	ISSUED FOR INFORMATION	01/05/24	A.P.	S.G.	F	LAWN AND LANDSCAPING AREA ADDED	28/11/24	T.R.	S.G.
REV	DESCRIPTION	DATE	DRN	APP	REV	DESCRIPTION	DATE	DRN	APP




Designed	A.PERICH
Date	01.05.24
Drawn	A.PERICH
Approved	S.GRAY
Date	01.05.24
DA Number	N/A

BW **Beveridge Williams**
Development & Infrastructure Consultants
Truganah Business Park Unit 4, 5 Coleray Ct
Truganah NSW 2209
p: 02 43512233
www.beveridgewilliams.com.au

Project Details	WSU BANKSTOWN CAMPUS LOT 2 IN DP 1291984, 2A BULLECOURT AVENUE, MILPERRA
Drawing Title	SALES OFFICE CARPARK SWEEP PATHS

PRELIMINARY PRINT
NOT FOR CONSTRUCTION

Sheet 03 of 03			
Scale	1:200 @ A1		
Project Number	Reference	Drawing No	Revision
2301879	305	940	G